

The Little Gozinta Bag

The perfect gift bag for whatever goes into it!
Pattern can be expanded to any size to fit the intended contents.



Designed by Christine Mitchell.

Read instructions carefully before starting the project.

Materials:

- 2 x contrasting fat quarters
- Patch of fabric for embroidery - 10cm larger than embroidery
- 2.2m cord for draw strings
- Optional ends for draw strings
- Threads for embroidery and construction
- Tear-a-way stabilizer for embroidery
- Optional temporary spray adhesive
- Small amount of fusible web to fit embroidered patch

Tools required:

- Brother Disney Embroidery and Sewing machine
- J foot, N foot, buttonhole foot and the embroidery foot for your machine
- Fabric marking pen, scissors, measuring tape, pins
- Optional cutting mat, ruler and rotary cutter

Preparation and Cutting:

1. Cut 2 x 10' x 14'in (25 x 35cm) bag fabric, repeat for contrast lining or substitute your measurements for another size.
2. Place pattern on the top edge corners of the bag pieces, cut top shaping.
3. Using the pattern as a guide, place a small mark with fabric pen at the start of the buttonholes (not on the lining).
4. Cut 4 x 1' x 1.5'in (3 x 4cm) out of scrap fabric to use as stabilizer behind the buttonholes.

Embroidery:

1. Hoop the embroidery frame with a good embroidery tear-a-way.
2. Use a temporary spray adhesive on the back of the patch to be embroidered or attach to the stabilizer with a basting stitch.
3. Choose a design from your machine and Embroider Mickey or Minnie in colours to compliment the colours in your fabrics.
4. Remove from embroidery frame and carefully remove the stabilizer.
5. Press embroidery face down onto a towel.
6. Iron fusible web to the back of the patch.
7. Trim embroidered patch to size, remove paper backing.
8. Position patch on bag front, not too close to the top because embroidery will get lost in the folds when the bag is closed, press to attach.
9. Attach N foot and using your favourite blanket stitch around patch.

Construction:

1. Sew a sample buttonhole, cut and make sure cord fits the hole.
2. Place fabric stabilizer behind buttonhole and position remembering that the buttonholes sew backwards. Sew buttonhole.
3. Right sides together, pin the front and back of the bag together. Using 3/8'in (1cm) seam sew sides and bottom of bag.
4. Repeat for lining but leaving a 4'in (10cm) gap in bottom.
5. Press side seams open.
6. Turn lining right side out, place lining in bag right side together.
7. Pin top edges together matching side seams, sew 1/4'in (6mm) seam around the top.

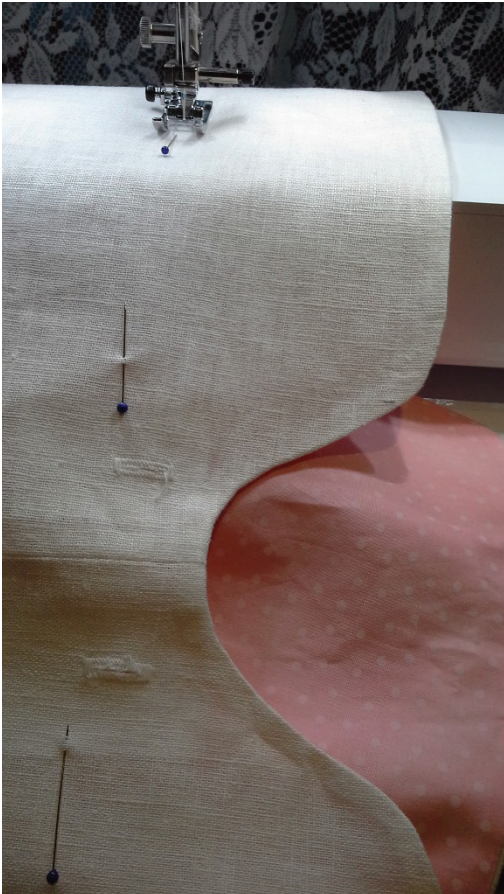


8. Clip and notch the top edge around the curves.



9. Turn right side out through the gap in the lining.
10. Press making sure the curves are smooth.

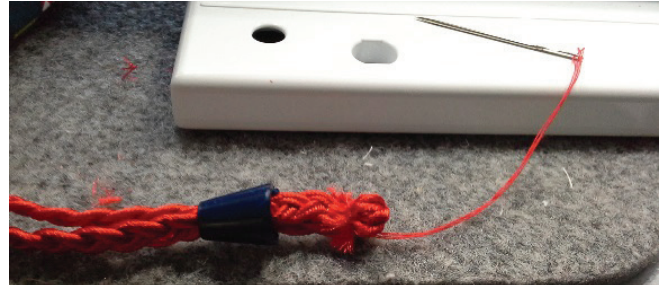
11. Take the flat bed with accessory compartment off the machine and slip the bag top over the free arm. Sew two rows of stitches, one level with the top of the buttonhole and stitch again level with the buttonhole bottom.



12. Edge stitch the gap in the lining closed.
13. Thread the cord through front left front buttonhole, continue all the way around and come out the back left buttonhole. Repeat for the right.



14. Tie cord ends or use purchased cord ends.



Congratulations, your Gozinta Bag is finished!



Share your creation on Facebook:
facebook.com/brotheraustralia



Share your creation on Instagram
with #BrotherCreates:
instagram.com/brotheraustralia

