

Jimmy Owl Pin Cushion



Designed by Christine Mitchell

Read instructions carefully before starting the project.

Note: I almost never wash fabric before using, I use good quality fabrics and rarely have trouble. If you are using fabric that you think the colour may run, dampen a tissue and press against the doubtful fabric, if there is colour transfer, wash. A small amount of shrinkage would not be a problem with this project.

Tools Required:

- Brother Sewing Machine with zig zag J foot, open toe embroidery foot
- Fabric scissors, measuring tape, pins etc.

Optional:

- Cutting mat, ruler and rotary cutter

Materials:

- Scraps or 2 squares of fabric from layer cake
- Small amount of white felt or fabric if using fabric join two layers together with fusible web
- Small amount of black for eyes
- Small amount of fabric for beak
- Threads to match fabric, white to stitch applique eyes
- 6" x 8" iron on pellon
- Small amount fusible web

Tip: To get to know your feet I suggest:

- That you read the instructions that come with the foot
- Do some quick exercise and keep your samples
- Write setting onto the fabric to remind you next time you come to use them
- Samples can be any size, I do them in the fabric I'm using if possible, size about 20 x 15cm depending on scrap fabric. Do them in the same weight fabric and stabilizer with pellon on one side to have the same effect as the cushion

Cutting directions:

- Cut 2 x 6" x 5" for front and back
- Cut 1 x 7" x 5" pocket
- Cut 2 x 3" x 3" for wing front
- Cut 2 x 3" x 3" for wing back
- Cut pellon 2 x 3" x 3" wings
- Cut pellon 1 x 6" x 5" for front of cushion

To make the Pin Cushion front:

1. Iron the pellon to the back of the owl front and to the wing fronts following manufactures instructions.
2. Fuse two layers of white fabric together or use white felt. Cut circles for eyes using pinking shears.
3. Draw two circles for eye centres on the paper side of the fusible web, iron onto the back of the black fabric. Cut out. Iron onto the centre of the white eye fabric.
4. Draw beak onto the paper side of the fusible web, iron to onto the back of the beak fabric.
5. Position beak onto owl front.
6. Attach open toe embroidery foot, select, stitch your favourite blanket stitch around the beak with colour to match.
7. Position eyes, change thread to white and stitch around the black eye centres to attach eyes to owl front.



8. Mark sewing lines on the wrong side of the pocket.

To make pin cushion back:



9. Cushion back right side up, cover with pocket right side down matching notches, stitch along lines, back tacking at each end. Flip top of pocket over to cover stitching, press.

10. Stitch ¼"inch (75mm) seam along bottom edge.

To make wings:

11. Place Inside wings right side up, outside wing right side down and cover with pellow. Pin wing pattern to the top and cut. Repeat for second wing.
12. Stitch around outside edge with ⅜" (1 cm seam).
13. Trim with pinking shears or clip curves. Turn right side out and press.

To put the pin cushion altogether:

14. Place the back right side up, position wings level with the top edge of the back pocket, the tips should just overlap. Inside wings should be on top. Pin
15. Cover with pin cushion front right side down. Make sure head is at the top. Stitch around the edge ⅜" (1cm) seam leaving a small opening in the bottom to turn through.
16. Stuff well with toy fill and slip stitch opening closed.
17. Fill back pocket with quick unpick, marking pencil and blunt nose scissors, making this the handiest little pin cushion yet!

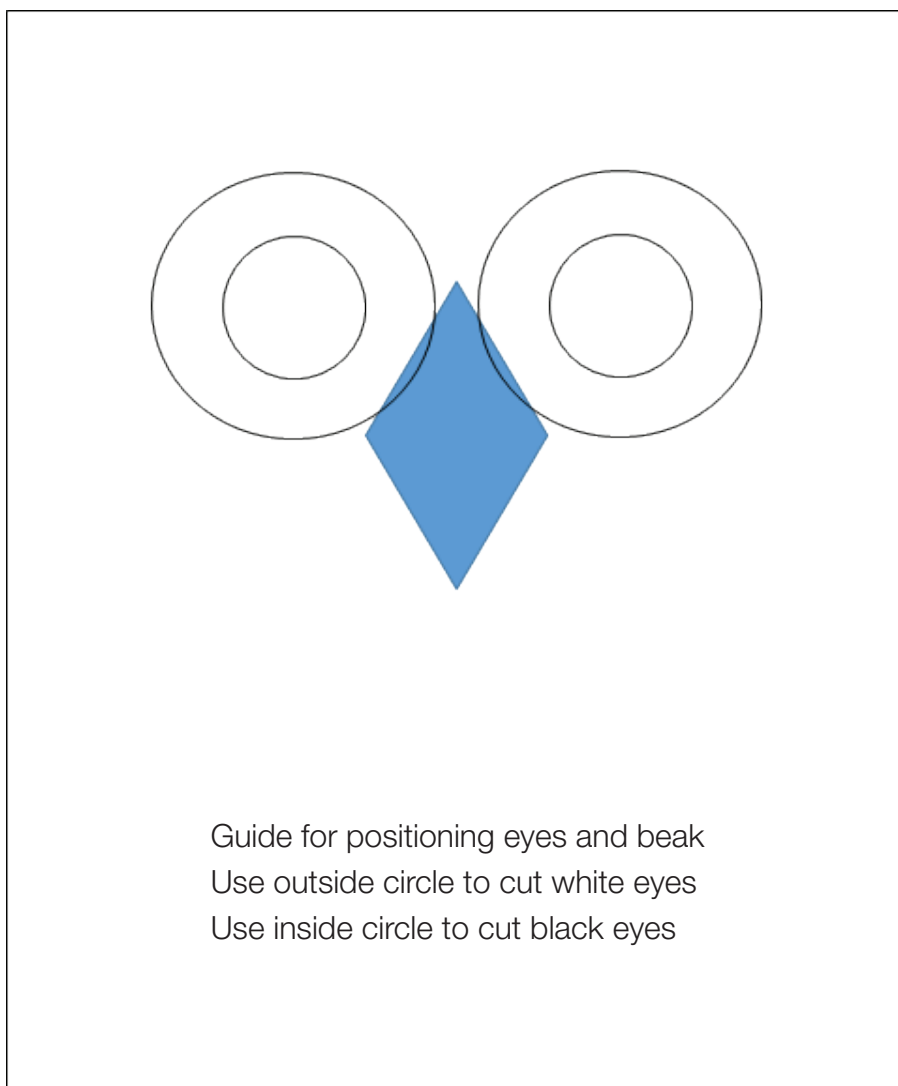
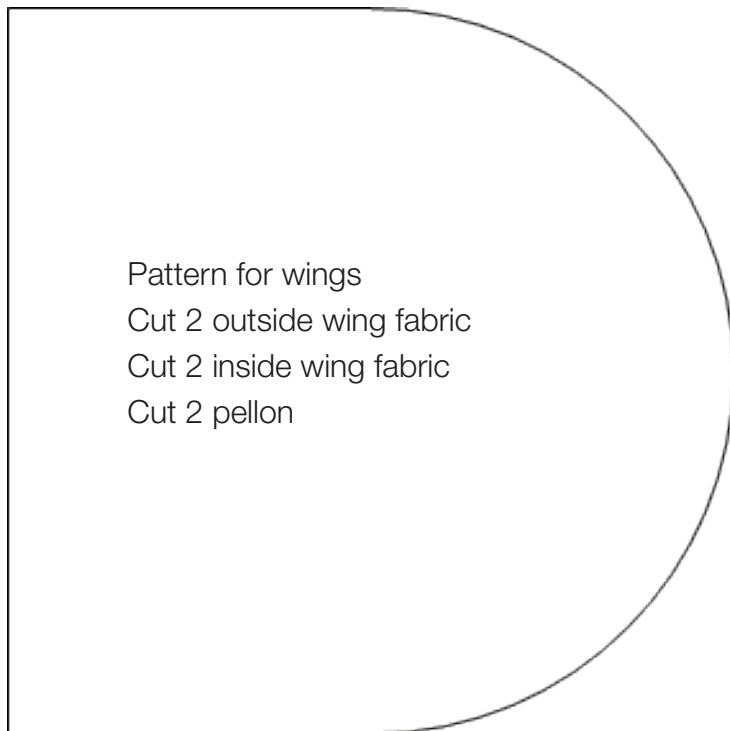
Congratulations your Jimmy the Owl pincushion is complete!



Share your creation on Facebook:
facebook.com/brotheraustralia

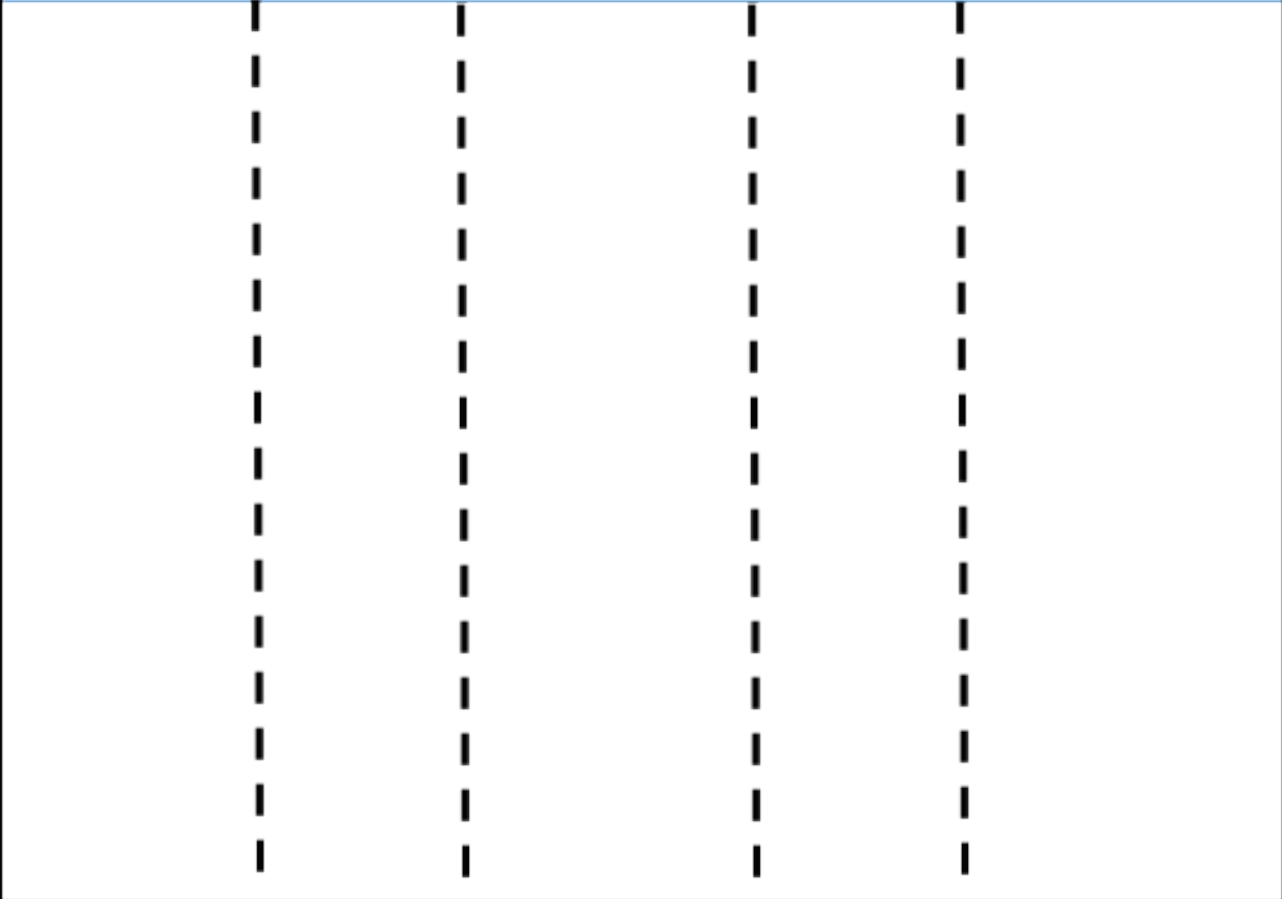


Share your creation on Instagram
with #BrotherInspires:
instagram.com/brotheraustralia



Pocket guide
Stitching line for accessories can be
changed to suit the individual

Half way fold line



Bottom of pin cushion