

Facilitating Change Throughout Your Supply Chain







\ Introduction

Many Australian businesses are adjusting to the realities of an increasingly online consumer base. A recent Guardian report detailed exponential increases in shipping costs across the supply chain – a 12.2 metre-long shipping container that once cost between \$1,400 and \$2,100 AUD is now 10 times more expensive.¹

Combine material shortages with increased consumer demand, today's organisations must be willing to adapt to a host of unpredictabilities across the entire supply chain. Implementing change to keep up with an increasingly demanding environment is causing organisations to pivot their business strategies, creating complexity for upstream and downstream partners.

The modern supply chain also faces visibility challenges around siloed data, which can disrupt reporting and forecasting if the right processes aren't in place.²

This eBook will examine how your business can facilitate change throughout the supply chain by deploying a range of digital and oversight solutions.

¹The Guardian, "Australia's supply chain issues likely to continue despite drop in Covid cases." Retrieved from [Australia's supply chain issues likely to continue despite drop in Covid cases | Business | The Guardian](#)

²Blume Global, "What Are The Main Supply Chain Challenges?" Retrieved from [What Are the Main Supply Chain Challenges? | Blume Global](#)

\ The challenges of minimal oversight

Outdated supply chain metrics and modelling practices can slow down the efficiency and accuracy of traceability and future forecasting. If a business is reliant on inefficient processes as it attempts to grow,

it can expose vulnerabilities in its reporting and monitoring capabilities.

Two key indicators of outdated business processes include:

1 \ Unintegrated contract management platforms



Unchained resources that handle procurement and sourcing can affect your ability to see the end-to-end supply chain data. If you're attempting to combine reports from disparate data sources, you may miss delivery tracking insights or contract lifecycle bottlenecks. A single source of truth – a solitary reporting and analytics platform – unifies supply chain workflows

2 \ Inefficient financial tracking



Does your oversight architecture accurately compare data regarding distribution of products against the terms and conditions of a contract order and highlight opportunities to eliminate unnecessary spending?

\ Re-link your supply chain

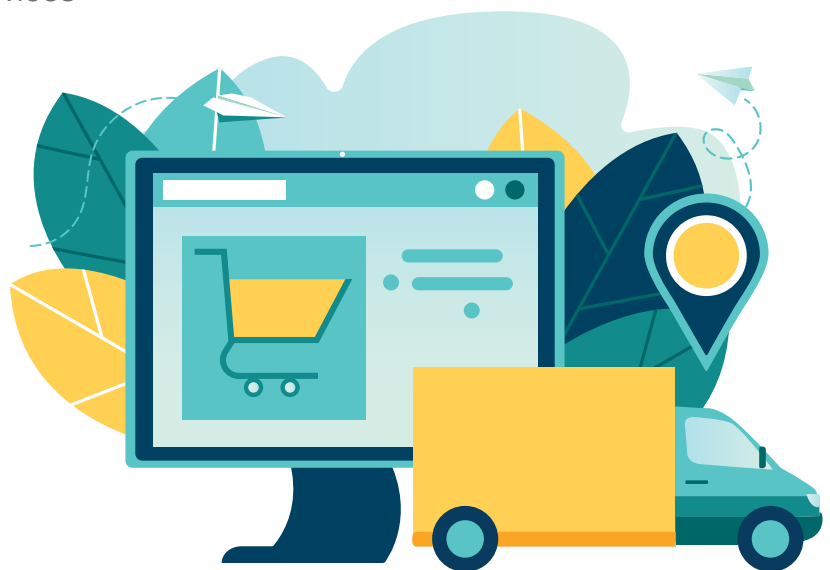
Brother provides change management solutions that seamlessly integrate with your current architecture to streamline your supply chain management processes. [Software Development Kits](#) (SDKs) allow you to consolidate your mobile printing and labelling resources, so that everything from asset tagging to delivery updates can be monitored in real-time.

Deploying devices in the field that integrate to your analytics software saves time once reserved for transferring data on spreadsheets to your platform.

A [Managed Print Service](#) (MPS) solution identifies the ideal print processes for your organisation, and provides devices

and assets along the supply chain to enhance your critical business processes. The ongoing monitoring of your new print environment – using centralised data analytics updated in real time – [can predict disruptions](#) before they slow the productivity efforts of your business.

The customisable business enhancements offered by these new insights affords your organisation the versatility to scale and optimise your supply chain infrastructure.



\ Old problems, new solutions

For many businesses, the tried-and-true processes that handle supply chain management work, but are they as efficient as they could be? The accelerated pace of today's logistics industry requires solutions that can keep pace.

Consolidating all of your invoices, receipts and spreadsheets onto your new digital platform may seem like a daunting task, however the bulk scanning capabilities of today's leading devices can create a digital workflow and save on manual processing time.

Brother [scanners](#) that can connect to Optical Character Recognition (OCR) software can quickly process and digitise your critical documents. Devices like the [ADS-4900W](#) Desktop Document Scanner come equipped with a 100-sheet Automatic Document Feeder (ADF) and fast-scanning technology that can automate bulk scanning tasks quickly and efficiently.

OCR technology saves time and costs by automating data extraction from any document or image file. Once digitised, your records, invoices and spreadsheets can be updated or amended in real-time, by any authorised personnel across the entire supply chain.

Employees looking to access maintenance records, update repair logs or add columns to tracking invoices can enjoy real-time access to essential workflow documents.



w37b12tsqr64nptm12



2417 STOCK
WAREHOUSE

No 46, The High Street, Manchester M45 6TF

Fero que quisci te con nossin consequam erit officiis ad
t quam etur, ipsae. Ro vollaut quaspedit laut optionse
ex eum ipsume nonesci musapic aboremp. oriant.
Ugiasimi,quos exped ma con nimi, unture net iuntemo lu.

The delivery office Limited.
Banks Court.
Banks Lane.
The Midlands
BH23 5GH

WS 546-02



LATEST UPDATED INFORMATION: Ferro que quisci te con nossin
consequam erit officiis ad et quam etur, optionse ex eum ipsume.



Quantity

10
3
1
6
8
5
6
8
3

Items

Fero que quisci te con nossin consequam.
Erit officiis ad et quam etur.
Quaspedit laut optionse ex eum
Ipsume nonesci musapic aboremp.
Orian. Ugiasimi uos exped ma con nimi.
Onture net iuntemo lu.
Fero que quisci te con nossin consequam.
Erit officiis ad et quam etur.
Quaspedit laut optionse ex eum

Units

4,000
1,500
1,000
6,000
5,000
4,000
1,500
1,000
6,000

brother

ADS-4900W

9:00 AM 01.01.2022



to PC



to Network



to FTP/SFTP



to Workflow



Settings



to Email Server



to SharePoint



Basic 1

Basic 2

Custom 1

Custom 2



\ End-to-end visibility

If you're adopting the critical workflow processes up to this point, a response to outdated change management systems has resulted in the adoption of a centralised document management system. The deployment of a scanning solution has enabled the transition to a digital workflow. Now it's time to improve visibility and traceability for products and processes across the supply chain.

[Durable identification and asset management solutions](#) can increase supply chain visibility. Whether it's managing physical assets or keeping your staff aware of procedures, label makers and printers are essential for many operations. Brother [P-touch TZe](#) laminated tapes have been designed to withstand virtually any condition.

Labelling your products makes it easier to stay in control of your inventory and helps traceability efforts in the event of theft or product loss. The scanning of TZe tamper evident tapes can provide real-time tracking updates, and equip your delivery team with pertinent information regarding delivery locations, expiration dates and more.

A professional desktop label printer like the [Brother PT-P900W](#) allows your workforce to produce high-quality labels on the go, thanks to its optional battery base and rechargeable lithium-ion battery pack. [Barcodes and QR codes](#) can house critical information on one easily scanned label, empowering your workforce with the ability to update changes along the supply chain.



\ On-the-go efficiency

The connectivity of an efficient supply chain workflow depends on devices that relay critical information. From warehouse management to delivery tracking, today's mobile printers and labellers offer versatile visibility improvements.

By deploying handheld devices across the supply chain, your workforce will always have connected solutions in the palm of their hands. Here's how you accelerate warehouse workflows using handheld devices:

1 \ Inventory management



A portable printer like the [RJ-3250WB](#) can easily adapt to your work environment, and is the ideal tool to print sales orders, confirmation labels and returned goods receipts.

2 \ One-touch label creation



Accurate documentation provides an audit trail and ensures compliance with government regulations.

3 \ Unbroken process management



The ability to move printers to where they are needed instead of having goods picked and brought to a single printing area for labelling increases on-the-floor productivity

\ Enhancing sustainability efforts

A digitised business workflow can contribute to the sustainability initiatives many Australian business are conducting¹ in order to achieve a circular economy – an organisational infrastructure that champions the reusing and recycling of existing materials and products for as long as possible.²

By deploying a document management solution, your business can enjoy a digital workflow that streamlines each of the scanning, managing and sharing processes we've outlined as part of your comprehensive change management strategy.

A document management platform brings together all of this connected infrastructure in order to securely manage your critical data and resources.

This complete, end-to-end management solution will provide you with real-time accessible analytics into the cost and resource savings of your digitised architecture. You'll enjoy complete visibility into the efficiency and productivity boosts of your streamlined workflows, and showcase how a progressively paperless infrastructure is helping your bottom line while benefiting the environment.

¹Allens, "The era of responsibility – top ESG trends for 2022."

Retrieved from <https://www.allens.com.au/insights-news/insights/2022/02/The-era-of-responsibility-top-ESG-trends-for-2022>

²McKinsey, "Profits with purpose: How organizing for sustainability can benefit the bottom line." Retrieved from <https://www.mckinsey.com/~media/McKinsey/Business%20Functions/Sustainability/Our%20Insights/Profits%20with%20purpose/Profits%20with%20Purpose.ashx>



\ Brother partners to facilitate change

Brother offers bespoke change management solutions for Australian organisations moving towards a sustainable, digital future.

To enhance your visibility into the processes that fuel your supply chain, you'll need to empower your workforce while consolidating your operational infrastructure in ways that encourage cross-department collaboration.

From the warehouse floor to the front door, your customers will appreciate the speed and efficiency of a newly-digitised architecture that keeps pace with an increasingly fast and complex logistics landscape.

To get started with a seamless deployment and update process, contact Brother today and request a [comprehensive print analysis](#). This complimentary service will match your needs to the necessary tools.

We have a team of commercial specialists Australia-wide, ready to empower your business with the print, label and scan solutions that promote a sustainable future.

With Brother, your streamlined change management strategy [starts today](#).



brother
at your side

Connect with us to find out more



brother.com.au | corpsolutions.brother.com.au