

brother
at your side



The Ultimate Guide to Label Printing

How to choose them and use them
at home and work



Contents

Introduction to Label Printing	Page 3
Home Label Printing	Page 4
3 Questions That Need Answering	Page 4
Uses and Applications	Page 7
Best Practices	Page 8
Professional Label Printing	Page 11
Choosing Your Solution	Page 11
Industry Applications	Page 12
Best Practices	Page 15
Continuing Your Label Journey	Page 16



Introduction to Label Printing

The value of a quality label printing solution is often understated. Whether you're printing at home or on the job, making the most of your labels begins by making the right choice.

In this eBook, we'll guide you through everything there is to know about label printing and how you can identify the best solution for your needs, whether it be for personal or professional use. Here, you'll learn:



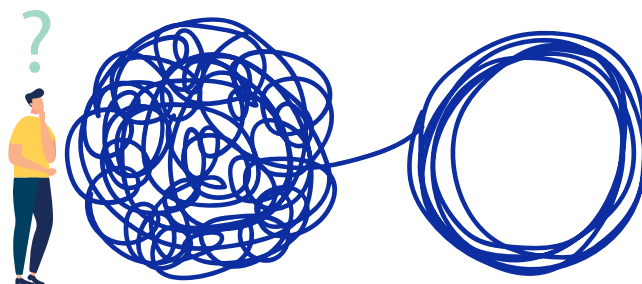
How to choose your labels



How to use your labels



How to optimise the label printing experience



3 Questions That Need Answering

Whether you're picking between big and small or paper and film, there's a lot of home labelling options to choose from. Identifying the right solution for your needs is no easy task. That's why it's best to first ask yourself a few key questions:

1 \ What and where are you labelling?



Are you labelling for your home office? Or to tidy up the kitchen? Knowing what you intend to label and where that label will reside can help determine whether you need paper or laminated labels.

2 \ What size labels do you need?



Larger labels may be more visible, but smaller ones may be a better fit for precise applications. With continuous labels and a printer with a built-in automatic cutter, you can print different sizes without needing to change the label each time.

3 \ What type of durability are you looking for?



Whether you're organising your freezer or labelling a lunchbox, it's important to know what conditions your labels are up against. If factors like water, detergents, abrasions or chemicals are a concern, you'll need laminated labels printed from thermal transfer hardware.



Codafit

STEPHON'S
NOTEBOOK





Uses and Applications

When you take a closer look around the house, you'll realise that there's no shortage of places to use your labels. Top to bottom, homes are full of practical label applications:



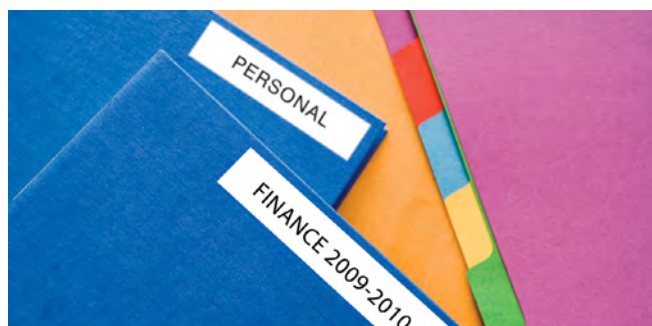
Kitchen

Labelling is a great way to organise pantry items, identify potential allergens and keep everybody's favourite water bottles safe and accounted for. It ensures every item is put back in its place after being used so that nothing ever goes missing.



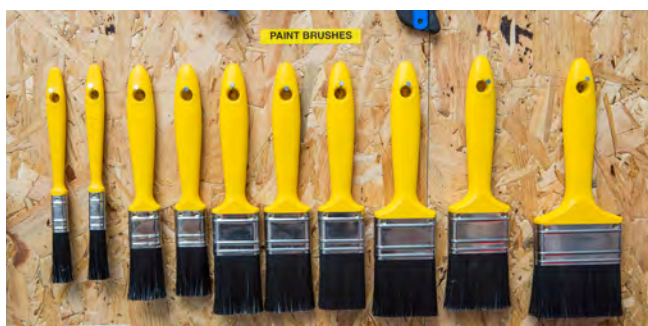
School Items

Households with children know the value of keeping things clean and organised. Labels affixed to lunchboxes, backpacks and other personal items ensure children don't lose track of their belongings as they travel to and from school.



Home Office

From desk drawers to office supplies to file cabinets, labels keep your most important items readily accessible at a moment's notice.

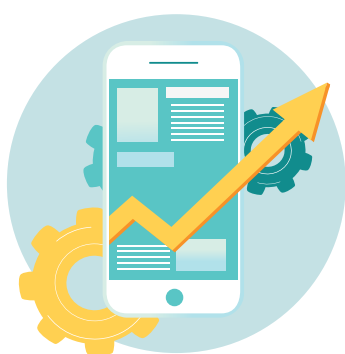


Garage

As home to both chemicals and power tools, the garage can be a dangerous place for unsuspecting visitors. Labelling these items is a good precaution to keep everyone safe and identify potential danger.

Best Practices

Now that you've narrowed down your choices and learned where to apply your labels, it's time to put your solution into action. Here's a few key tips that will make home labelling a quick and easy experience:



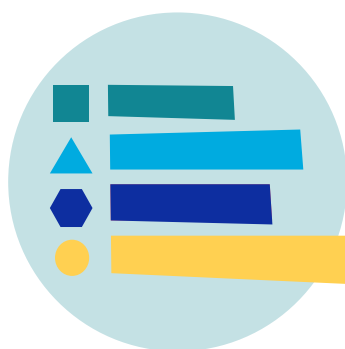
Use labelling apps on your smartphone

Some label printers support Bluetooth or Wi-Fi connectivity so that they can be used with label creation apps. This makes it easier to design labels inside one user interface from the convenience of your phone.



Try preset templates

Labelling apps also feature pre-designed templates for specific uses, such as labelling kitchenware, office supplies or other home appliances.



Colour-code your labels

This can be an effective way to strategise your home labelling with an easy-to-understand system, even for small children.



Use durable technology

Durable labels are longer-lasting and more cost-effective than ordinary labels. They resist light, temperature, water, chemicals and abrasion – plus they have stronger adhesive properties.





Choosing Your Solution

Professional labels serve a lot of important purposes, but not all labels are created equal. To choose the best solution for your business needs, first you'll need to answer the following questions:

What are you labelling?



Labelling food items for cold storage is very different from labelling a box for shipping. To make the most of your labels, you need to know exactly where they'll be deployed.

What size labels do you need?



The wrong size label won't fulfil its purpose as effectively as the perfect fit would. It's best to identify the optimal size for your intended application to make the most of its benefits.

How many labels will you be printing?



Industrial range printers are for anyone printing up to 1,000 labels per day on the device. Low-volume users, generally under 200 labels a week, are best for professional range printers.

Do you need a database connection?



Many label printers provide free versions of database software, but lack full capabilities. The best solution will give you full control over design at no extra cost.

Do you need to print QR or barcode labels?



The best label printers support barcodes and QR codes in one single software.

Industry Applications

When you take a closer look around your workplace, you'll realise that there's no shortage of places to use your labels. Top to bottom, professional industries are full of practical label applications:



Healthcare

Medical professionals often print prescription labels, medicine labels, patient wristbands and visitor badges in their daily operations.



Warehouse & Logistics

From asset tracking to shipping labels to shelf management, barcodes and QR codes are a staple of the modern supply chain.



Manufacturing

With many on-the-job dangers, warning signs, tracing labels and maintenance stickers are critical for workplace safety.



Retail

Not only are retailers labelling products, they're also printing receipts, name badges and QR codes.



General Office Use

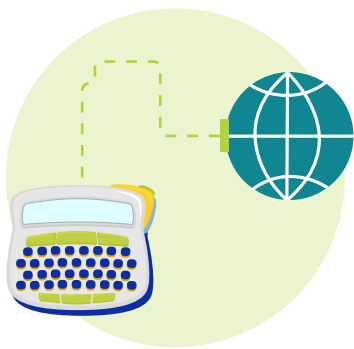
Whether working remotely or in the office, labels are great for visitor badges, identifying files and organising supplies.





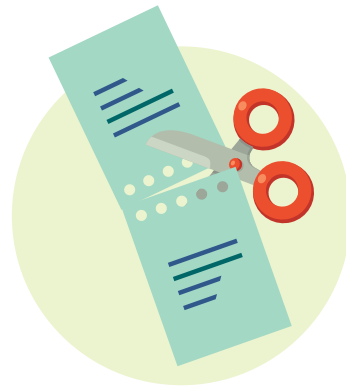
Best Practices

Now that you've narrowed down your choices and learned where to apply your labels, it's time to put your solution into action. Here's a few key tips that will make professional labelling a quick and easy experience:



Connect to a database

Manual label creation is time consuming. To improve accuracy, save time and labour, and reduce overall costs, connect your label printer to a database or Excel spreadsheet – it's especially useful for product information and address labels.



Printing tape in high volume? Try the half-cut feature

Printing copies of the same label with the half-cut feature can prevent waste by automatically cutting each section.



Easy timestamps

When labelling food products, deliveries or shipping labels that require an accurate timestamp, you can automatically apply them within your editing software (depending on your software capabilities).



Smart workflows

Ensure you select hardware that suits any workflow for maximum efficiency - from totally mobile to a stationary dedicated workstation, and anywhere in between!



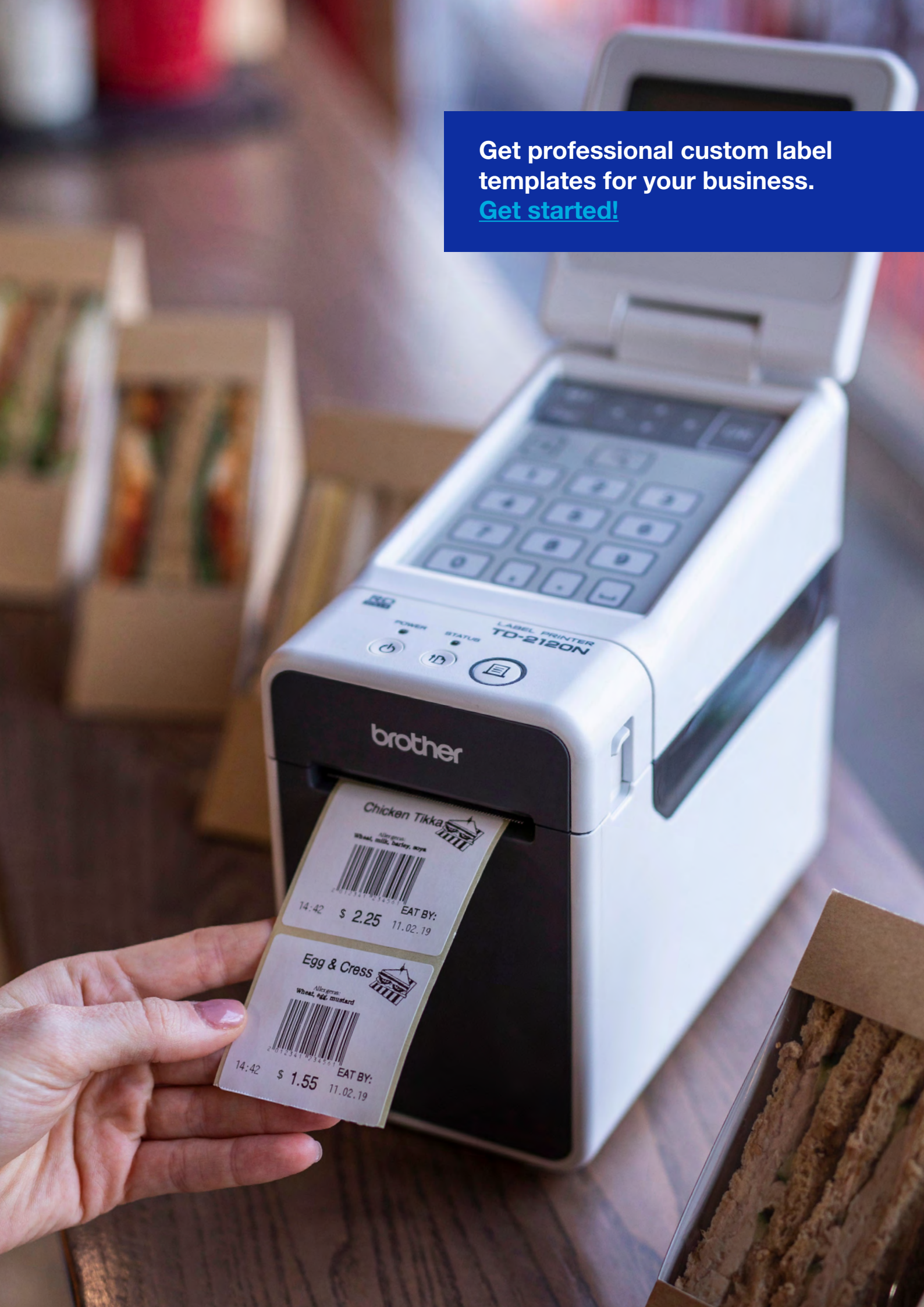
Continuing Your Label Journey

No matter where you plan to use your labels, first you need to choose the right solution. Whether you're printing at work or at home, in a lab or in the kitchen, you need a label printing solution tailored to fit your specific requirements.

We understand the value of a quality labelling strategy. That's why we provide a comprehensive range of label printers and label tapes for a wide variety of durable, convenient and long-lasting applications.

Learn more about how we can optimise your label journey by [contacting our team](#) today.

Get professional custom label templates for your business.
[Get started!](#)



brother
at your side

Connect with us to find out more



brother.com.au | corpsolutions.brother.com.au