

PT-P900 Series Label Printers

PT-P900W
PT-P950NW

LABELS THAT STICK.

P-touch

brother.com.au



Introducing the Label Printers that make business a pleasure

Offering the highest print speed and print resolution in their class, the PT-P900W and PT-P950NW are easy-to-use, offering durable laminated labels up to 36mm in width.



Key Features:



Easy-to-use professional label design software

Both models use the free P-touch Editor label design software that's ideal for both Windows and Mac operating systems. It boasts advanced features such as industry standard 1D and 2D barcodes, the importing of logos and other graphics, as well as the fonts installed on your computer. It also links to Microsoft Excel® spreadsheets or .csv files to rapidly print multiple labels.



Wired and wireless connectivity, including Bluetooth

These compact desktop label printers can be connected to your PC or Mac using the integrated USB or Wi-Fi connections. The PT-P950NW model can also connect to your wired network, and has an optional Bluetooth module that allows it to easily connect directly to tablets, portable PCs and to Bluetooth input devices such as barcode scanners.



Create and print labels from your smartphone or tablet

The Brother iPrint&Label app wirelessly connects to the printer to let you design and print labels from your device. That means you don't need to turn on your PC at all. Need to label electrical and datacom cabling and equipment? Simply use the Brother Cable Label Tool app to print labels perfect for wrapping around cables or for sticking to faceplates and electrical distribution boards.



Include label printing as part of your solution

Software and app developers can use various software development kits (SDK) for Microsoft Windows, iOS and Android devices to enable label printing from within your own software and apps. This makes these label printers ideal to integrate into custom solutions.



Flexibility and portability to print labels from anywhere

Find yourself on-site and without power? Whether you're on a construction site or simply need to print labels while on a portable trolley, this range has the answer. Simply attach the optional battery base and rechargeable lithium-ion battery pack to allow label printing wherever and whenever required.



Print labels on demand without a PC

Ideal for the food, healthcare and laboratory markets, the optional Touch Panel Display Unit (for PT-P950NW only) lets you print labels without a connection to a PC. Design your label(s) and upload to the required location(s) indicated on the buttons. Simply design, upload and press to print. It's that easy. Additionally, there's a built-in clock ideal for "Use By" or "Printed On" labels.

Packed with features

Key features

PT-P900W PT-P950NW

| | | |
|--|---|---|
| Prints durable labels from 3.5mm to 36mm in width | ● | ● |
| Large 32mm print height for near edge-to-edge printing | ● | ● |
| 360dpi print resolution for crisp text, images and barcodes | ● | ● |
| High-speed printing of up to 60mm/second | ● | ● |
| USB and Wi-Fi connectivity | ● | ● |
| Wired network connectivity (10/100 Base-TX) | | ● |
| Advanced cutter prints easy-peel labels in a continuous strip | ● | ● |
| Includes free professional desktop label design software for PC/Mac | ● | ● |
| Software development kits available to easily add label printing to your own software or apps | ● | ● |
| Merge text contained in Excel, .csv and MSDE/SQL databases to easily batch print many labels at once | ● | ● |
| Prints 1D and 2D industry standard barcodes | ● | ● |
| Free iOS/Android label apps to print labels from smartphones/tablets | ● | ● |
| Optional battery base and Li-ion rechargeable battery | ● | ● |
| Optional RJ25 to DB9M serial adapter | ● | ● |
| Optional Bluetooth interface | | ● |
| Optional Touch Panel with backlit LCD display to print custom labels without the use of a PC | | ● |



Laminated



Temperature Resistant



Water Resistant



Fade Resistant



Abrasion Resistant



Chemical Resistant

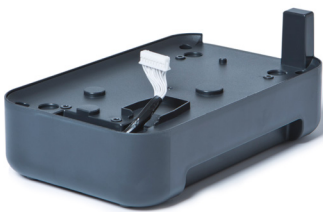


Easy Peel



Strong Adhesion

Optional Accessories



PA-BB-002
Battery base for Li-ion battery



PA-BT-4000LI
Lithium-Ion rechargeable battery



PA-SCA-001
RJ25 to DB9M serial adapter



PA-BI-002
Bluetooth interface (PT-P950NW only)



PA-TDU-003
Touch Panel display unit for stand-alone printing of labels (PT-P950NW only)

Technical Specifications for the PT-P900W Series

Hardware

| | |
|----------------------|---|
| Roll Compatibility | TZe, HSe (Heat-shrink Tube) |
| Maximum Label Width | 36mm |
| Maximum Print Height | 32mm |
| Print Resolution | 360 dpi |
| Max. Print Speed | 60mm / second |
| Interface | USB 3.0, Ethernet 10 Base-T/100 Base-TX (PT-P950NW only), Wireless IEEE802.11b/g/n, Serial RS-232C (for printing ESC/P commands only. Requires optional serial adapter), Bluetooth 2.1+EDR (Optional accessory for PT-P950NW) |
| Cutter Type | Full automatic with half cut function |
| Buttons & Status LED | Label Status, Battery, Power, Feed&cut, Wi-Fi |

Built-in Software

| | |
|---|--|
| Number of Copies | 1 - 999 (P-touch Template) |
| Built-in Barcode Protocols | CODE39, CODE128, UCC/EAN-128(GS1-128), ITF(I-2/5), CODABAR(NW-7), UPC-A, UPC-E, EAN-13(JAN13), EAN-8, GS1 DataBar (RSS) (Omnidirectional, Truncated, Stacked), PDF417 (Standard, Truncated, Micro), QR Code (Model 1, Model 2, Micro), Data Matrix (ECC200 Square, ECC200 Rectangular), MaxiCode |
| Printer Control Commands | Raster mode, ESC/P, P-touch template mode (standalone) |
| Built-in Fonts | (ESC/P) Bitmap fonts: Helsinki, Letter Gothic |
| Built in Fonts (P-touch Template) | Bitmap fonts: Helsinki, Letter Gothic, Brussels, Gothic Outline fonts: Helsinki, Letter Gothic, Brussels, Gothic |
| Built in Font Styles (ESC/P) | Bold and Italic |
| Built in Font Styles (P-touch Template) | Bold, Italic, Outline, Shadow, Shadow and Outline |
| Special Printing | Mirror printing (P-touch Editor) Vertical printing (P-touch Template) Rotated printing (P-touch Template) |

Mobile Device Printing

| | |
|---------------------------------|---|
| Mobile Device App | Yes; iPrint&Label for iOS® and Android, Mobile Cable Label Tool and Mobile Transfer Express |
| Development Kit (SDK) Available | Yes |

System Preferences

| | |
|----------------------------------|--|
| Operating Systems | Windows Vista(R), 7/8/8.1/10, Server 2008, 2008, R2/2012/2012 R2 Mac OS X 10.8 or greater |
| Interface | USB 2.0, Ethernet 10 Base-T/100 Base-TX (PT-P950NW only), Wireless IEEE802.11b/g/n, Serial RS-232C (for printing ESC/P commands only. Requires optional serial adapter) Bluetooth 2.1+EDR (Optional accessory for PT-P950NW) |
| Microsoft® Office P-Touch add-in | Microsoft® Word 2007/2010/2013/2016 Microsoft® Excel® 2007/2010/2013/2016 Microsoft® Outlook® 2007/2010/2013/2016 |

Weight and Dimensions

| | |
|------------|--|
| Dimensions | 118mm (W) x 192mm (D) x 146mm (H) |
| Weight | 1.48kg (PT-P900W) / 1.51kg (PT-P950NW) |

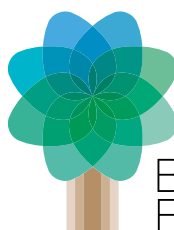
Carton Contents

| | |
|----------|--|
| Includes | PT-P900W or PT-P950NW, 36 mm TZe-261 black on white label cassette (8m), AC adapter, USB cable |
|----------|--|



Working with you for a better environment

At Brother, our green initiative is simple. We strive to take responsibility, act respectfully and try to make a positive difference to help build a society where sustainable development can be achieved. We call this approach Brother Earth.



Brother
Earth



brotheraustralia



Brother International
Australia



BrotherAU

brother
at your side

All specifications correct at the time of printing and are subject to change. Brother is a registered trademark of Brother Industries Ltd. Brand product names are registered trademarks or trademarks of their respective companies.