



P-touch 9700PC/9800PCN  
Professional PC labelling  
machines with advanced  
labelling functions.

Print high quality, durable labels  
up to 36mm in width, using the  
built-in USB or network ports and  
the included label design software.





## The need for labelling

Help organise your workplace with clear, high quality, durable labels, office stationery, archive folders, company assets, shelving, parts labelling and custom signage are just some of the many applications. Whether you need one or a hundred labels at a time, a Brother P-touch 9700PC or P-touch 9800PCN will help ensure your day-to-day work runs as efficiently as you need it to. And with the wide variety of tape widths and colours available you're sure to find one suitable for your needs.



Bring efficiency and organisation through clear identification of your items



P-touch laminated labels are designed to withstand extreme conditions

## The P-touch 9700PC and P-touch 9800PCN

Developed for the professional user and boasting the highest print resolutions and speeds in this category of labelling machine, these two flagship PC labelling machines are able to use all the widths, colours and materials available in the TZ and HG tape ranges, producing professional, durable and customised labels on demand.

Both models incorporate an advanced cutter that either fully cuts the label, or just cuts half way through, so your labels can be printed in one long strip and simply peeled individually when required. P-touch Editor, Brother's professional label design software is included as standard and offers a comprehensive range of functions to print information such as barcodes, images and data stored in various database formats.

Features	Ptouch 9700PC	Ptouch 9800PCN
If you need durable, customised labels from 3.5 to 36mm in width, the P-touch 9700PC and P-touch 9800PCN are the most professional P-touch labelling machines available.		
Print resolutions of up to 720x360dpi H6	✓	✓
Print speeds of up to 80mm/second H6	✓	✓
Accepts tape cassettes from 3.5mm to 36mm	✓	✓
Easy label change cassette system	✓	✓
Professional label design software included	✓	✓
Advanced cutter with full & half cut capabilities	✓	✓
Print up to 5,000 labels per print job*	✓	✓
Supports over 15 popular 1D & 2D barcode protocols*	✓	✓
Link to data in .xls, .mdb files & SQL server databases*	✓	✓
Automatic date/time printing capability*	✓	✓
Advanced image dithering for high-quality images*	✓	✓
Network ready		✓
Network printer administration software included		✓
Network label editing software included		✓
Stand-alone barcode label copying capability		✓
Windows Server 2003 support		✓
Windows Server 2008 support		✓



# P-touch 9700PC labelling machine

## Produce professional labels on demand

Developed for professional use in either the office or industry, the P-touch 9700PC prints labels for any application. Externally, the machine has both USB and RS-232C serial ports, for quick and easy connection to a PC or Mac.\* Inside you will find a high resolution print head that, when used in conjunction with HG tapes, offers a print resolution of up to 720 x 360dpi, and a print speed of up to 80mm/second. Perfect for where many labels are required quickly, such as in manufacturing, event management, filing systems and asset management.



P-touch Editor 5 label design software supports many different barcode protocols



Printing of high resolution greyscale images (such as photographs) is possible using the specialised HG tape



Find important information quickly through clear and precise labelling



Brother TZ and HG laminated labels are suitable for the most demanding of applications

P-touch 9700PC Features	P-touch 9700PC Included items
Prints labels up to 36mm in width	PT-9700PC labelling machine
Print speed of up to 80mm/second	HG-261 36mm black on white tape (8 metres)
USB / RS-232C ports	P-touch Editor 5 label design software
Advanced cutter for easy label management	AC adapter
Label editing software supplied at no additional cost	USB cable

\*Mac P-touch Editor software only available in English



00002394  
10982543  
LO:54B2

PN 00002394  
SN 10982543  
LO 54B2

# P-touch 9800PCN labelling machine

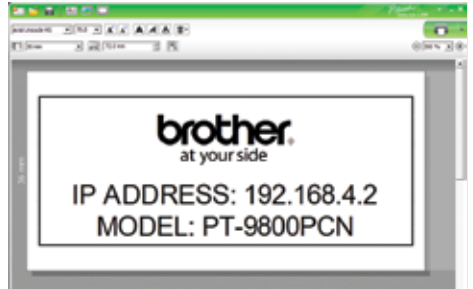
## Network ready for maximum flexibility

With all the features found in the P-touch 9700PC, this advanced model adds networking as standard, allowing multiple users to share the labelling machine. The included P-touch Editor Lite LAN label design software can be placed on a central network drive to allow all network users to create labels without any software or driver installation required.

Create copies of barcode labels by connecting a USB barcode scanner\* directly to the front of the labelling machine – no PC connection required.



Built-in networking gives the freedom to place the P-touch 9800PCN wherever it is required



Easy-to-use labelling software is available to all network users without the need of installation



Print custom labels that include a copy of a scanned barcode - without the need of a PC\*



Microsoft Excel data can be merged with the label layout to print labels containing variable data

P-touch 9800PCN Features	P-touch 9800PCN included items
Same features as PT-9700PC plus:	PT-9800PCN labelling machine
Direct copying of barcode labels – no PC required*	HG-261 36mm black on white tape (8 metres)
Integrated 10/100 Base TX network port	P-touch Editor 5 label design software
Remote printer management via network	PT-Editor Lite LAN label design software
Support for Windows Server 2003/2008 operating systems	AC adapter
	USB cable

\*USB barcode scanner not supplied



## Common features found on both models

Both the P-touch 9700PC and P-touch 9800PCN are based on the same durable printing mechanism, and using the specialist HG tape cassettes, boast an impressive print speed of up to 80mm/second, and a print resolution up to 720 x 360 dpi for perfect image printing. When printing multiple labels, the built-in advanced cutter will keep the labels attached to the backing paper. This ensures that labels are kept in the correct order, and also makes peeling the labels easier from the backing material. Advanced label editing software and a tape cassette are supplied as standard, making both models ready for use straight out of the box.



Advanced cutter to keep sequential labels in the correct order



TZ and HG tape cassettes are extremely quick and easy to change

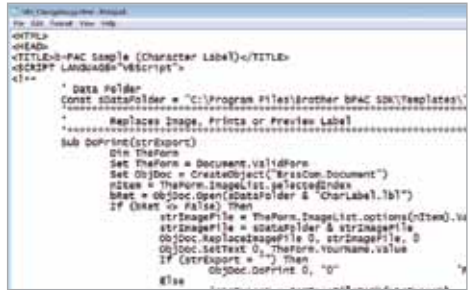
## Software solutions



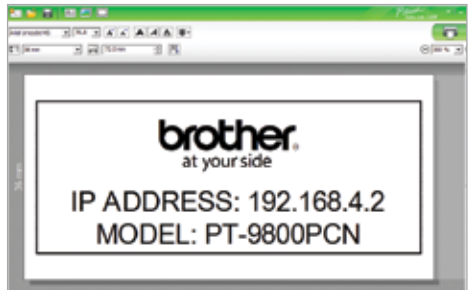
P-touch Editor 5 gives full control of label design which can include text, barcodes and images



Use the Brother ESC/P printer language to send simple text commands containing label data



The b-PAC SDK allows system developers to add label printing from within their own programs



P-touch Editor Lite LAN gives all network users a quick and easy way to print labels (PT-9800PCN only)

## P-touch Editor 5

Create your own custom labels with pixel precision, by using this powerful software solution. With features such as support for over 15 barcode protocols, advanced image dithering to print high quality greyscale images, and the ability to link to data contained in Excel spreadsheets for batch printing of labels, any label design is possible.

## b-PAC Software Development Kit

Developed for advanced users such as system integrators, by adding just a few lines of programming code, label printing is possible from many Windows™ applications.

- Create a label template using P-touch Editor 5 and save the file to your PC.
- Using the b-PAC SDK, send the relevant commands to add your text/barcode/images to the label template.
- Issue the print command from your program.
- The b-PAC SDK will then create and print the label containing your information.

More details can be found at <http://www.brother.com/bpac>

## Brother ESC/P printing

Connect to non-windows devices using the RS-232 serial port. By sending simple text commands containing the label format and the text/barcode to be printed, the labelling machine will print the label required. No driver or software needs installing.



## P-touch 9800PCN specific features

The P-touch 9800PCN has a built-in 10/100 Base-TX network port with embedded web server enabling remote management, and is fully compatible with BR-Admin Lite network management software as used with other Brother networked products as part of a total solution.

Being network ready offers many advantages including:

- Many users can print to the same labelling machine, reducing the cost of ownership.
- P-touch Editor LAN Lite software (supplied) can be placed on a central network drive and lets multiple users simply run the software as and when a label is required. As no software or printer driver requires installing, this is the perfect solution for use by many users within a company.

The PT-9800PCN boasts a wide range of connection options and is the most advanced machine in the P-touch range



Multiple users can print labels as network support is standard on the P-touch 9800PCN

The stand alone barcode copying function allows repair centres/production lines or other barcode users to easily print labels with a copy of a barcode, without requiring the expense of a PC for each labelling machine

### Stand alone barcode copying function\*:

- Design your label using P-touch Editor including the required barcode.
- Upload your label design to the P-touch 9800PCN.
- Disconnect from the PC – no connection is required to copy barcodes.
- Connect a USB barcode scanner\* to the front USB port.
- Scan the required barcode.

When the barcode is scanned, the barcode number is sent to the P-touch 9800PCN. This data is then used to change the barcode on the stored label to the required format, and the label is then printed.

\* USB barcode scanner not supplied



Design your label in P-touch Editor and upload to the memory of the P-touch 9800PCN



Disconnect the PC and connect the barcode scanner



Scan the required barcode to send the data to the P-touch 9800PCN



The P-touch 9800PCN creates the required barcode, and the label is printed

## Brother P-touch laminated labels

Unlike ordinary labels, Brother P-touch laminated TZ and HG tapes consist of six layers of materials, resulting in a thin, extremely strong label. Characters are formed with a thermal transfer ink and sandwiched between two protective layers of PET (polyester film). We've tested them to the extreme, against the effects of abrasion, temperature, chemicals and sunlight. Results prove that Brother P-touch laminated labels out-perform competitor labels, so you can be confident of a professional quality label that has been designed to last.

### Tested to the extreme

Brother P-touch laminated labels were tested under laboratory conditions and a summary of the results can be found below. For more detailed information on the tests, please see the "Technical data for TZ tapes" leaflet.



Temperature Resistant



Water Resistant



Fade Resistant



Abrasion Resistant



Chemical Resistant



Laminated



**Temperature resistant:** laminated labels were subjected to temperatures ranging from -80C to +150C for 240 hours, and the text was found to be unaffected



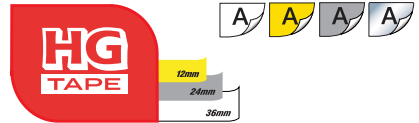
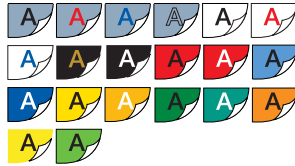
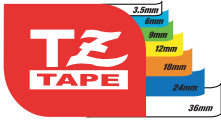
**Fade resistant:** after laminated labels were placed in a fade-inducing chamber to simulate a year in sunny surroundings, the text was unaffected



**Water and chemical resistant:** glass plates with laminated labels attached were immersed in water and various chemicals for two hours. The text was unaffected



**Abrasion resistant:** after a 1kg sanding device was passed over the laminated labels 50 times, the text was unaffected



## HG tape cassettes

A professional tape cassette specifically designed for the P-touch 9700PC and P-touch 9800PCN that offers higher print speeds and print resolutions compared to TZ tapes, yet still offers the durability found on TZ tape cassettes.

- Up to 80mm/second print speed (High Speed Draft mode) for instant label production on demand.
- Up to 720 x 360dpi print resolution (High Resolution mode) for clearer greyscale images.

## TZ tape cassettes

Available in a wider range of colour combinations, materials and widths, from 3.5mm up to 36mm, this tape has been developed for a wide range of labelling applications.

- Wider range of tape colours and tape widths for all labelling applications
- Speciality tapes are available for specific labelling applications



**Flexible ID tape:** specifically developed for attaching a label to curved surfaces



**Strong adhesive tape:** offers better adhesion on textured surfaces compared to standard tapes



**Security tape:** a special tamper evident tape that cannot be re-applied once removed



TZ tapes are available in a wide range of colours and sizes

# Hardware

	PT-9700PC	PT-9800PCN
Colour	Light grey & pearl white	Dark grey & pearl white
Ports	USB (ver 2.0 full speed) RS-232C serial (9 pin)	USB (ver 2.0 full speed) RS-232C serial (9 pin) Ethernet (10/100 Base-TX)
Dimensions	116 mm (W) x 193 mm (D) x 140 mm (H)	116 mm (W) x 193 mm (D) x 140 mm (H)
Weight	1.57 kg	1.58 kg
Tape widths	TZ tape: 3.5, 6, 9, 12, 18, 24, 36 mm HG tape: 12, 24, 36 mm	TZ tape: 3.5, 6, 9, 12, 18, 24, 36 mm HG tape: 12, 24, 36 mm
Print resolution	TZ tape: 360 x 360 dpi HG tape: 720 x 360 dpi (high resolution mode) HG tape: 180 x 360 dpi (high speed mode)	TZ tape: 360 x 360 dpi HG tape: 720 x 360 dpi (high resolution mode) HG tape: 180 x 360 dpi (high speed mode)
Max. print height	27.1 mm	27.1 mm
Max. print speed	TZ tape: 20mm / second HG tape: 52mm / second (high speed mode) HG tape: 80mm / second (high speed draft mode)	TZ tape: 20mm / second HG tape: 52mm / second (high speed mode) HG tape: 80mm / second (high speed draft mode)
Cutter sensor	Yes	Yes
Tape end & width sensors	Yes	Yes
Cutter type	Full automatic with half cut function	Full automatic with half cut function
Buttons	2 (power on/off and tape cut)	2 (power on/off and tape cut)
Status LED	2 colours (green and red)	2 colours (green and red)
Power	100-220 auto switching AC adapter	100-220 auto switching AC adapter



PT-9700PC: Fully featured labelling machine for use with a PC or Mac



PT-9800PCN: Advanced network ready labelling machine for sharing between multiple users

## Stand-alone / ESC/P / P-touch Template modes

	PT-9800PCN
Maximum Print Width	27.1 mm
Min. / max. label length	4 mm - 1000 mm
Number of copies	1 - 999 (P-touch Template)
Built-in Barcode protocols	CODE39, CODE128, UCC/EAN-128(GS1-128), ITF(1-2/5), CODABAR(NW-7), UPC-A, UPC-E, EAN-13(JAN13), EAN-8, GS1 DataBar (RSS) (Omnidirectional, Truncated, Stacked), PDF417 (Standard, Truncated, Micro), QR Code (Model 1, Model 2, Micro), Data Matrix (ECC200 Square, ECC200 Rectangular), MaxiCode
Printer control commands	Raster mode, ESC/P, P-touch template mode (stand-alone)
Flash memory size	PT-9700PC: 2MB / PT-9800PCN: 7MB
Character code set	Standard character code Windows-1252 Western Europe character code Windows-1250 Eastern Europe character code
Built in fonts (ESC/P)	Bitmap fonts: Helsinki, Letter Gothic
Built in fonts (P-touch Template)	Bitmap fonts: Helsinki, Brussels, Letter Gothic Outline fonts: Helsinki, Brussels, Letter Gothic
Built in font sizes (ESC/P)	Bitmap fonts: 21/28/44/56/88/120 dots
Built in font sizes (P-touch Template)	Bitmap fonts: 21/28 dots Outline fonts: 35 dots - 380 dots (20 sizes)
Built in font styles (ESC/P)	Italic, Underline, Bold
Built in font styles (P-touch Template)	Outline, Shadow, Outline+Shadow, Italic, Bold, Vertical
Built in font widths (ESC/P only)	x2, x1/2
Special printing	Mirror printing(P-touch Editor) Vertical printing(P-touch Template) Rotated printing(P-touch Template)

	PT-9700PC	PT-9800PCN
Included Items	PT-9700PC PC labelling machine 36 mm HG-261 black on white label cassette (8m) AC adapter USB cable CD-ROM containing software, drivers and user guide	PT-9800PCN PC labelling machine 36 mm HG-261 black on white label cassette (8m) AC adapter USB cable CD-ROM containing software, drivers and user guide

## System Requirements

	PT-9700PC	PT-9800PCN
Operating systems	Microsoft® Windows® 2000 Professional (SP4 or higher) Microsoft Windows XP Windows Vista®  Mac OS X 10.4 - 10.6	Microsoft® Windows® 2000 Professional (SP4 or higher) Microsoft Windows XP Windows Vista® Windows Server® 2003 Windows Server® 2008 Mac OS X 10.4 - 10.6
Interfaces	USB (ver 2.0 full speed) RS-232C serial (9 pin)	USB (ver 2.0 full speed) RS-232C serial (9 pin) Ethernet (10/100 Base-TX) USB-A (USB host version 2.0 full speed)
Hard disk space	Windows : more than 70MB Mac : more than 100MB	Windows : more than 70MB Mac : more than 100MB
Memory	Microsoft® Windows® 2000 Professional: 128MB minimum Microsoft® Windows® XP : 128MB minimum Windows Vista® : 512MB minimum	Microsoft® Windows® 2000 Professional: 128MB minimum Microsoft® Windows® XP : 128MB minimum Windows Vista® : 512MB minimum Windows Server® 2003 : 128MB minimum Windows Server® 2008 : 512MB minimum
Graphics adapter	SVGA with 16 bit colour depth minimum	SVGA with 16 bit colour depth minimum
Others	CD-ROM Drive	CD-ROM Drive
Microsoft® Office add-in	Microsoft® Word 2000/2002/2003/2007 Microsoft® Excel 2000/2002/2003/2007 Microsoft® Outlook® 2000/2002/2003/2007	Microsoft® Word 2000/2002/2003/2007 Microsoft® Excel 2000/2002/2003/2007 Microsoft® Outlook® 2000/2002/2003/2007

**brother**®  
at your side

Brother International (Aust) Pty Ltd  
[www.brother.com.au](http://www.brother.com.au)