

At your side.  
**brother**®

HL-7050/HL-7050N

VERSATILITY

HL-7050

HL-7050N



**HL-7050N**  
Network ready

**HL-7050**

## HL-7050 / HL-7050N - High Speed Large Workgroup Laser Printers

The versatile network compatible or network-ready printers for large workgroups

up to **28** ppm

Up to 28ppm



Windows & DOS Compatible



Mac OS Compatible



Large Workgroup



PCL®6 & BR-Script Level 3 (Postscript Level 3 Language Emulation)

up to **2100** pages

Up to 2100 page paper capacity with option



Upgradeable to 288MB



Network Ready



24 hour / 7 day Online help



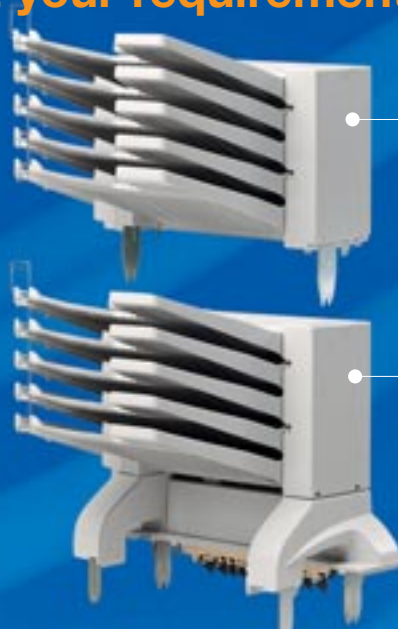
Optional Paper trays, Duplex Unit, Hard Disk, Flash Memory, Fonts & Mail boxes



# Expandability to meet your requirements

Options including:

- **Additional paper input lower trays**  
Increasing the paper input capacity up to 2100 sheets
- **Additional paper output mailboxes**  
Increasing the output capacity up to 1900 sheets
- **Duplex unit**  
For automatic printing on both sides of the page
- **Expandable memory**  
Up to 288MB with industry standard 100-pin DIMMs
- **Optional Hard Disk or Compact Flash storage**  
For forms storage, job reprinting and print job analysis



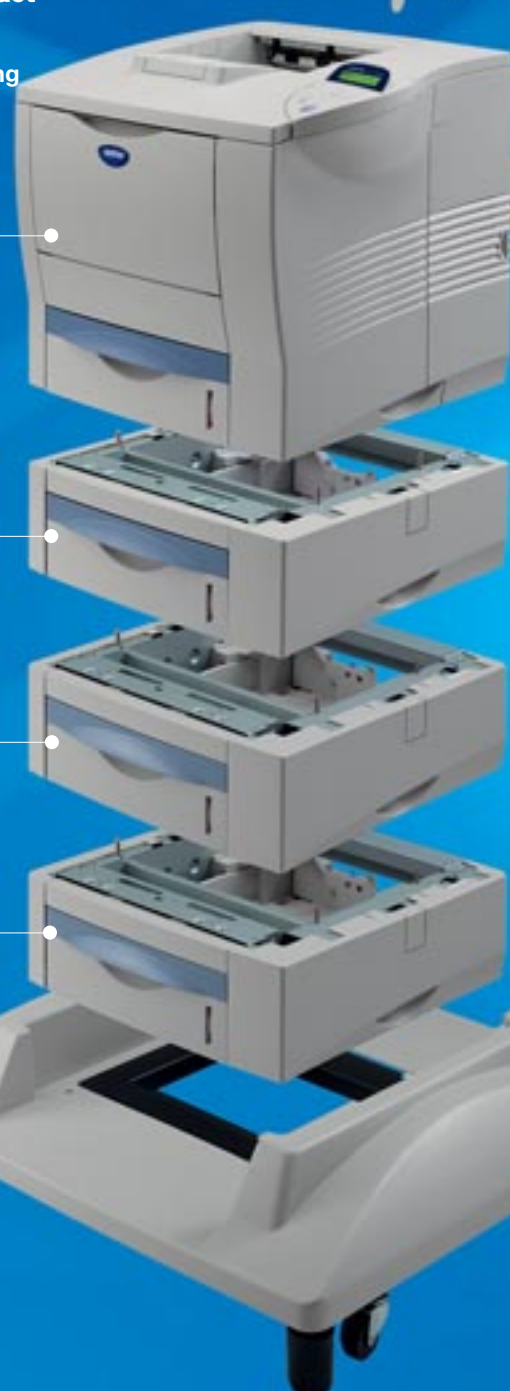
## MX-7005

Upper 5 bin mailbox

## MX-7000

5 bin mailbox

## HL-7050/HL-7050N



## DX-7000

Duplex unit

## DR-5500

Drum unit of up to 40,000 A4 or letter pages



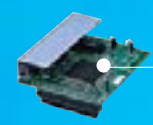
## LT-7000

Lower Tray (max 3 trays)



## TN-5500

Toner Cartridge of up to 12,000 A4 or letter pages at 5% coverage



## NC-4100h

10/100 Base TX Ethernet network interface (only for HL-7050)



## HD-EX

2.5" IDE of Hard Disk Drive 6GB

## SB-4000

Stabiliser unit



## The perfect printer solution when performance and reliability is required

### HL-7050/HL-7050N

In the modern office environment, the demand from printers is for increased productivity, at increasing speeds, with no loss of quality or reliability - requirements that the Brother HL-7050 and the HL-7050N (the network-ready option) comfortably meet.

They both offer high quality print delivered at speed, but also a range of outstanding paper handling options and flexible memory configurations. Where there used to be congestion, there can now be efficiently produced, professionally presented documents waiting to be collected.

- **Up to 28ppm high speed workgroup laser printer**
- **True 1200 x 1200dpi print quality**
- **PCL6® BR-Script 3 (PostScript 3 Language Emulation), IBM Pro Printer XL®, Epson FX-850® and HP-GL® emulations**
- **Windows®, Macintosh™ and Linux driver support**
- **Up to 600 sheets standard input capacity, expandable up to 2100 sheets**
- **3 Colour backlit LCD for easy status recognition**
- **Optional Hard disk/Compact Flash for forms storage and job re-printing**
- **Powerful network management capabilities**
- **TCO 99™ and Energy Star™ compliant**

### Real time prints

Resolve any departmental workflow issues with the new HL-7050 and HL-7050N. Both print at up to 28 pages per minute – with the first page being delivered in less than 11 seconds.

### Superb print quality

Both printers boast a true print quality of 1200 x 1200 dpi, guaranteeing crisp text and sharp graphics, supported by PCL6®, BR-Script 3 (PostScript 3 Language Emulation), IBM Pro Printer XL®, Epson FX-850® and HP-GL® emulations with 32MB (HL-7050) /

64MB (HL-7050N) of standard memory (upgradeable to up to 288MB). Every document is delivered with a professional finish.





## TCO'99 Accreditation

Brother is the only printer manufacturer with TCO 99 certification. TCO'99 is an exacting standard governing product safety, ergonomics, handling and physical design, working environment emissions, total environmental management strategy, manufacturing processes, ecology and the operator's manual.

### Ease of use

While technically sophisticated, the HL-7050 and HL-7050N are simple to operate, thanks to a clear and easy to understand control panel with an innovative three-colour LCD panel.

### Compatibility

The HL-7050 and HL-7050N are compliant with PC, Macintosh™, SAP and Unix/Linux platforms, together with Fast Ethernet, USB, Parallel and Serial port connectivity.

### Secure Printing

This standard feature ensures that sensitive documents can only be printed once a user-unique PIN has been entered into the printer via the control panel or web browser – eliminating the worry of your newly printed document being picked up by the unauthorised person.

### Last Job Reprint

This standard feature allows the most recent print job to be re-printed, without having to re-send it from your computer.

### Ecologically Aware

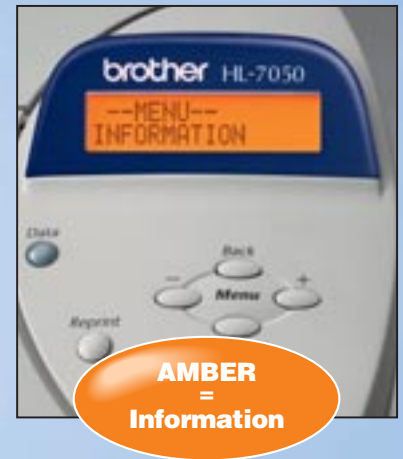
Brother is at the forefront of ecological awareness and utilises separate extra long life drum and toner consumables which in turn reduce costs and waste.

The chart below highlights the periodical change of an all-in-one supply against Brother's individual drum unit. Every step on the chart made by a leading competitor does potentially create measurable drum wastage. Brother supplies are designed to leave no surplus supply. Furthermore, both printers are supplied with the standard life of up to 40,000 page drum and up to 12,000\* page toner.

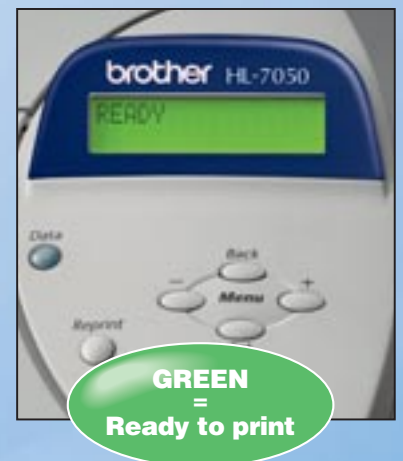
\*@ 5% Coverage, A4



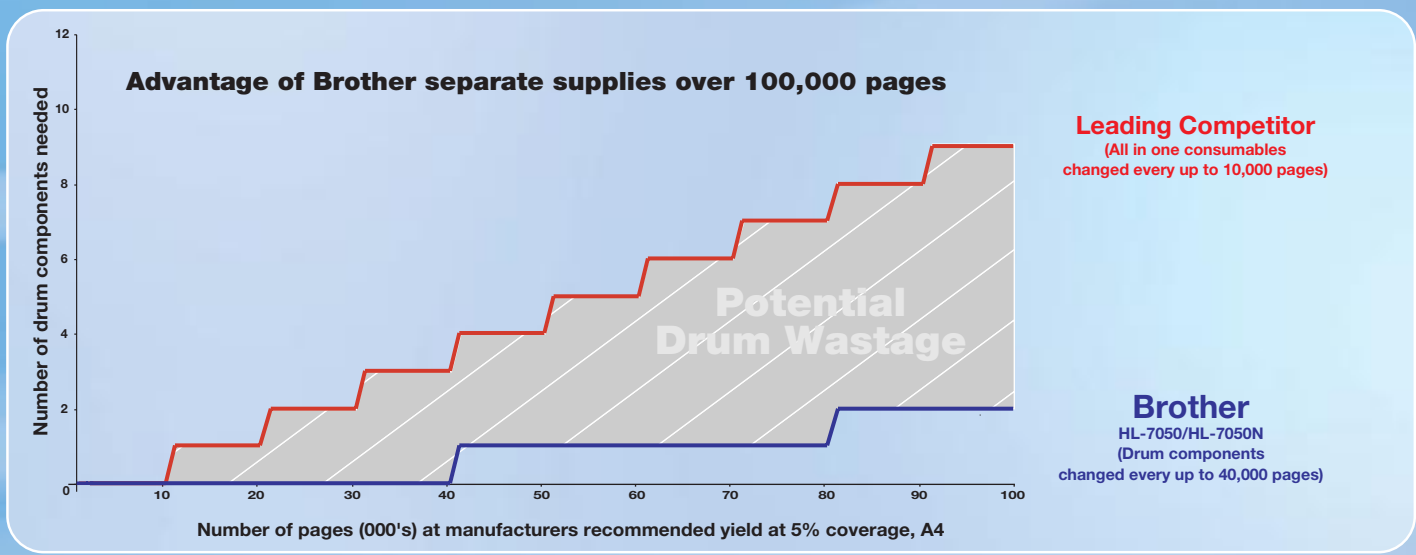
**RED**  
= Error



**AMBER**  
= Information



**GREEN**  
= Ready to print



**Leading Competitor**  
(All in one consumables changed every up to 10,000 pages)

**Brother**  
HL-7050/HL-7050N  
(Drum components changed every up to 40,000 pages)



## Advanced Networking

An optional network print server (NC-4100h is included with the HL-7050N) enables connectivity to Ethernet and Fast Ethernet networks.

Key features include:

- Easy-to-use embedded web server
- Built-in password protection - preventing unauthorised users from changing printer settings
- Sophisticated e-mail monitoring and e-mail report capabilities
- Supplied with Brother's BRAdmin Professional and new Web BRAdmin web based LAN/WAN management software
- HP JetAdmin Web based LAN/WAN management software compatible

## BRAdmin Professional and Web BRAdmin Software

Brother's powerful BRAdmin Professional and new Web BRAdmin software can be used to manage Brother printers as well as view the status of other SNMP compliant devices.

Key features include:

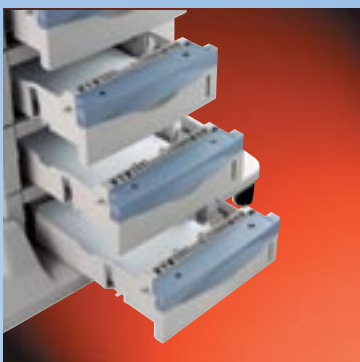
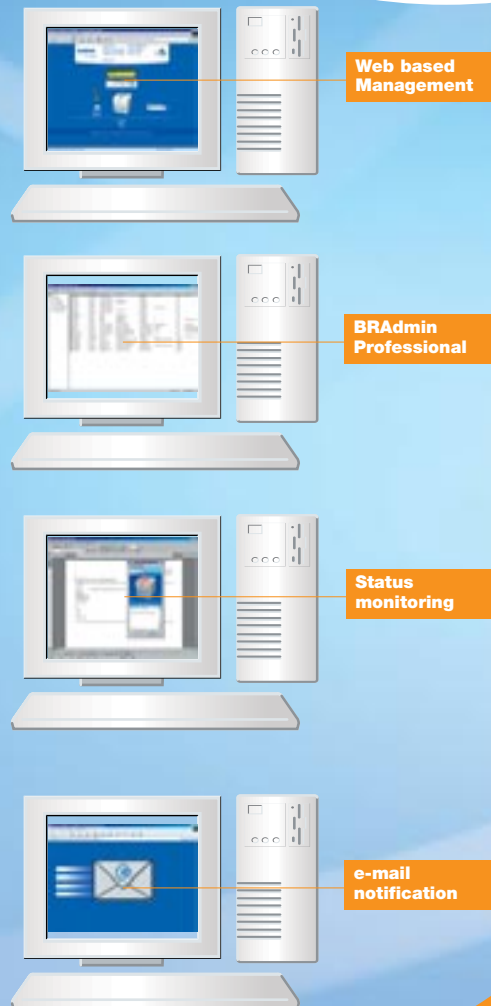
- Configure multiple or individual Brother network devices
- Manage other SNMP devices
- Record and analyse printer usage information
- Firmware upgrade capability

## Embedded web server support

In addition to these management applications, a built-in web server ensures that Windows®, Macintosh™ and even Unix or Linux users with web browser capabilities can manage the HL-7050N printer.

Key features include:

- Common user interface with all Brother for ease of navigation
- Configure printer and network settings
- Password protection stops unauthorised users from changing printer settings
- Find function to find other Brother and SNMP compliant devices





## Technical specification

### Engine

<b>Technology</b>		Electrophotographic
<b>Print Speed A4</b>	A4	Monochrome up to 28 pages per minute
<b>First Print Time</b>		Less than 11 seconds (This is the time taken from when the printer receives a PRREQ signal in the READY state to when one sheet (from the standard tray) is printed and delivered onto the output tray.)
<b>Resolution</b>	True quality	Up to 1200 x 1200 dpi
	Normal	Up to 600 x 600 dpi
	Draft	Up to 300 x 300 dpi
	HRC	For up to 300 / 600dpi (high resolution control)

### Controller

<b>Processor</b>		Toshiba TMPR4955 (266MHz)
<b>Memory</b>	Standard	32 MB (HL-7050) / 64MB (HL-7050N)
<b>Optional</b>		2 DIMM (100pin) slots, (16, 32, 64, 128MB). Indicating a possible expansion up to 288 MB memory
<b>Interface</b>	Standard	This printer has as standard IEEE 1284 Parallel and USB interface plus RS-232C serial interface
	Optional	10/100BaseTX Ethernet (Automatic Negotiation) (Standard on HL-7050N)
<b>Network Connectivity</b>	Protocol	External Ir-DA Interface (IR-1000) #1 TCP/IP, IPX/SPX, AppleTalk, DLC/LLC, NetBEUI, DEC LAT, Banyan VINES
	Management	Web BRAdmin for LAN/WAN Management BRAdmin Professional for LAN Management Embedded web based management for device management
<b>Storage</b>	Optional	Hard disk drive (HD-EX) CompactFlash memory
<b>Emulation</b>		PCL6, BR-Script3 (PostScript 3 Language Emulation), IBM Proprinter XL, Epson FX-850, HP-GL
<b>Resident Fonts</b>	PCL	66 scaleable fonts, 12 bitmap fonts, 11 bar codes
	BR-Script3	66 Fonts
	Optional	11 Agfa Barcode Fonts (BT-1000) 136 Agfa PS3 fonts (BS-3000)

### Software

<b>Printer Driver</b>		PCL driver for Windows®95/98/Me, NT®4.0/2000 and XP BR-Script3 (PPD file for Windows®95/98/Me,NT®4.0/2000/XP and Macintosh)
<b>Utilities</b>	Analysis tool software	Print job analysis software
	Driver deployment wizard	Step-by-step installation of a Brother Network printer on a networked Windows® PC
	Interactive help	Via CD on-line support, using on-screen guidelines and moving pictures
	Storage manager	Allows electronic forms, fonts, logos to be retained via the printer memory. For Windows® only

### Control Panel

<b>Display</b>	LCD	2 lines of 16 characters
	Back-lit	3 colour indicators
	LED	1 LED
<b>Buttons</b>		There are 7 buttons, Go, Job Cancel, Reprint, Menu, Back, and 2 Scroll Buttons

### Paper Handling

<b>Paper Input #2</b>	Standard	Up to 500 sheets
	Multi-purpose tray	Up to 100 sheets, or envelopes #3 and labels #3
	Optional	Up to 500 sheets (up to a maximum of three additional paper cassettes), bringing total paper capacity up to 2100 sheets (LT-7000)
<b>Paper Output #2</b>	Standard	Up to 500 sheets face down or up to 100 sheets face up can be stored in the output paper tray
<b>Duplex</b>	Optional	Automatic two-sided prints (DX-7000)
<b>Mail box</b>	Optional	Increase the total number of output bins to 10 by installing MX-7000 (5 bins) and MX-7005 (5 bins). Each bin can hold up to 100 sheets. Removing 2nd, 4th bins (MX-7000) and 7th, 9th bins (MX-7005) increases the total paper support to up to 1900 sheets (up to 500 sheets for the standard output tray, up to 700 sheets for MX-7000, and up to 700 sheets for MX-7005.)

### Media Specifications

<b>Media Types</b>	This printer accepts the following media types: Standard Tray: Plain paper, Bond paper, Recycled Paper Optional Lower Trays: Plain paper, Bond paper, Recycled Paper Multi-purpose Tray: Plain paper, Bond paper, Recycled Paper, Transparencies, Envelopes and Labels	
<b>Media Weights</b>	This printer accepts the following media weights: Standard Tray: 60 – 105gsm Optional Lower Trays: 60 – 105gsm Multi-purpose Tray: 60 – 199gsm	
<b>Media Sizes</b>	This printer accepts the following media sizes: Standard Tray: Cut sheet: A4, Letter, B5(JIS/ISO), A5, B6(ISO), A6, Executive, Legal Optional Lower Trays: Cut sheet: A4, Letter, B5(JIS/ISO), A5, B6(ISO), A6, Executive, Legal Multi-purpose Tray: Custom: 105 x 216mm – 148 x 356mm	

### Printer Driver Functions

<b>Page Layout #4</b>	N in 1 printing	This model has the ability to reduce 2, 4, 9, 16 or 25 A4 pages to print onto 1 A4 page
	Poster printing	This model has the ability to enlarge 1 A4 page to print onto 4, 9, 16 or 25 A4 pages
	Watermark printing	This feature can be used to watermark your documents with predefined text or bitmap image or with your own user-defined message / image
	Booklet printing	Can create a layout suitable for booklet printing #5
	Quick print set-up	This feature allows users to quickly select print options in the driver.
	Status monitoring	Can indicate the status of the printer onto a PC
	Secure printing	Enables you to send documents directly to the printer, those documents will only be printed as and when you enter your personal PIN number into the printer

### Supplies

<b>Toner Black</b>	TN-5500	Up to 12,000 A4 or letter pages @ 5% coverage
<b>Drum</b>	DR-5500	Up to 40,000 A4 or letter pages
		The frequency of replacement of consumables will vary depending on the complexity of the prints, the percentage of coverage, paper size, page per job, and the type of media. For example, transparencies, glossy coated paper will result in a shortened life of such supplies

### Accessories

<b>Lower tray</b>	LT-7000	Up to 500 sheets x max 3 trays - increase the printer paper capacity up to 1500 additional sheets
<b>Duplex unit</b>	DX-7000	Enable double-sided prints by adding a duplex unit
<b>Mail box</b>	MX-7000 / MX-7005	2 mail boxes of 5 bin mail stackers each - increase the amount the printer can output by up to 1400 sheets (Standard configuration)
<b>Stabiliser unit</b>	SB-4000	Move and re-position the printer easily by installing the stabiliser unit
<b>Network Card</b>	NC-4100h	A connection for the printer onto the network (Standard on HL-7050N)
<b>Hard Disk Drive</b>	HD-EX	2.5" IDE HDD of 6GB
<b>PostScript fonts</b>	BS-3000	A CD containing original PostScript level 3 fonts
<b>IrDA</b>	IR-1000 #1	A wireless printer connection for laptop PC
<b>Agfa Barcode Fonts</b>	BT-1000	10 genuine AGFA barcode fonts

### Dimensions & Weights

<b>Dimensions</b>	(485mm width) x (480mm depth) x (421mm high)
<b>Weight</b>	24.2kg for HL-7050 24.3kg for HL-7050N

### Others

<b>Power Consumption</b>	Printing	690W or less #6
	Standby	110W or less
	Sleep	16W or less #7
<b>Noise Level</b>	Printing	52dB or less
	Standby	40dB or less
<b>Ecology</b>	Power Saving	This enables the printer to consume less energy when not in use.
	Toner Saving	This reduces the toner usage and helps to reduce the total cost of printer ownership paper saving
	Paper Saving	2-in-1, 4-in-1, 9-in-1, 16-in-1, 25-in-1 printing

#1 Not supported on XP  
#2 Calculated with 80gsm paper  
#3 Number varies on the weight and type of materials. #7 Power consumption once fan has stopped  
#4 PCL Driver only  
#5 Installation of the Duplex option is required  
#6 Calculated using plain paper at 25°C  
#7 Power consumption once fan has stopped

### Contact

At your side.  
**brother**®

### Brother International Australia Pty Ltd

Corporate website: [www.brother.com.au](http://www.brother.com.au) Solutions website: [solutions.brother.com](http://solutions.brother.com)

NSW/ACT 7 Khartoum Rd. North Ryde NSW 2113 Phone: (02) 9887 4344 Fax: (02) 9870 7234

VIC 43 Carrington Rd. Box Hill VIC 3128 Phone: (03) 9899 4844 Fax: (03) 9899 4833

QLD/NT Unit 4, 57 Miller St. Murrarie QLD 4172 Phone: (07) 3348 9266 Fax: (07) 3348 9366

SA/TAS Unit 4, 13 King William Rd. Unley SA 5061 Phone: (08) 8272 1300 Fax: (08) 8272 1199

WA 117 Great Eastern Highway Belmont WA 6104 Phone: (08) 9478 1955 Fax: (08) 9277 2177

All specifications subject to change without notice. Failure to use only genuine brother supplies may damage the machine and such damages will not be covered under warranty.